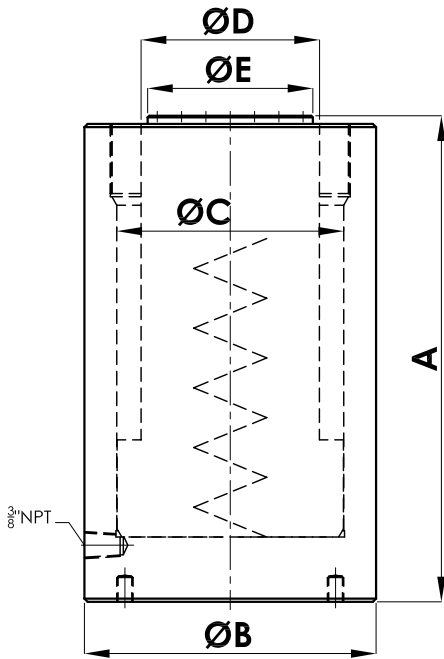


## SINGLE ACTING, PLAIN RAM, SPRING RETURN JACKS



**J-10**  
Pg 1/2

**SMHYDRA**  
HYDRAULIC SOLUTIONS

### Suitable Hand Pump

Tonnage	Model	Operating Stage	Oil Discharge
Upto 30T Jacks	HP-12	One	2.8 cc/stroke
Above 30T Jacks	HP-5012	1 <sup>st</sup> - upto 30 kg/cm <sup>2</sup>	49 cc/stroke
		2 <sup>nd</sup> - above 30 kg/cm <sup>2</sup>	2.8 cc/stroke

#### Features:

- \* 700 kg/cm<sup>2</sup> Series
- \* Multipurpose Industrial Application Jack
- \* Central-Load Application
- \* Base Hole Mounting & Collar Thread  
Mounting available on request
- \* Chrome Plated Body
- \* Motorised pumping units are also available

7SP Series    ⑦ 700 kg/cm<sup>2</sup>    ⑤ Single Acting Spring Return    ① Plain Ram    ⑤ Capacity (Ton)    ⑤① Lift (mm)

Cylinder Capacity (tonnes)	Lift (mm)	Model/ Code	Effective Area (cm <sup>2</sup> )	Oil Capacity (cc)	Closed Height (mm) 'A'	Cylinder OD (mm) 'B'	Bore Dia. (mm) 'C'	Ram Dia. (mm) 'D'	Saddle Dia. (mm) 'E'	Weight (Approx.) 'kg'
5	50	7SP-5-50	7.1	35.3	140	45	30	25	25	1.5
5	100	7SP-5-100	7.1	70.7	195	45	30	25	25	2.0
5	150	7SP-5-150	7.1	106	245	45	30	25	25	2.4
10	50	7SP-10-50	15.9	79.5	140	62	45	40	37	2.6
10	100	7SP-10-100	15.9	159	190	62	45	40	37	3.5
10	150	7SP-10-150	15.9	238.6	240	62	45	40	37	4.2
10	200	7SP-10-200	15.9	318	290	62	45	40	37	5.5
15	50	7SP-15-50	23.8	118.8	143	70	55	45	42	3.7
15	100	7SP-15-100	23.8	237.6	193	70	55	45	42	4.6
15	150	7SP-15-150	23.8	356.4	243	70	55	45	42	5.5
15	200	7SP-15-200	23.8	475.2	293	70	55	45	42	6.4
20	50	7SP-20-50	28.3	141.4	148	85	60	52	49	4.7
20	100	7SP-20-100	28.3	282.7	198	85	60	52	49	5.9
20	150	7SP-20-150	28.3	424.1	248	85	60	52	49	7.5
20	200	7SP-20-200	28.3	565.5	298	85	60	52	49	8.6
25	50	7SP-25-50	38.5	192.4	158	95	70	56	53	7.4
25	100	7SP-25-100	38.5	384.8	208	95	70	56	53	8.9
25	150	7SP-25-150	38.5	577.3	258	95	70	56	53	10.6
25	200	7SP-25-200	38.5	769.7	308	95	70	56	53	12.1
30	50	7SP-30-50	44.2	220.9	163	105	75	63	53	9.2
30	100	7SP-30-100	44.2	441.8	213	105	75	63	53	12.1
30	150	7SP-30-150	44.2	662.7	263	105	75	63	53	14.3
30	200	7SP-30-200	44.2	883.6	313	105	75	63	53	16.1

**Note: Customized Jacks are available on request. The dimension are subjected to change on account of design improvement.**

# SINGLE ACTING, PLAIN RAM, SPRING RETURN JACKS

# J10 2/2

7SP Series    ⑦ 700 kg/cm<sup>2</sup>    ⑤ Single Acting Spring Return    ⑥ Plain Ram    ⑤ Capacity (Ton)    ⑤① Lift (mm)  
 ⑤① Single Acting Load Return

Cylinder Capacity (tonnes)	Lift (mm)	Model/ Code	Effective Area (cm <sup>2</sup> )	Oil Capacity (cc)	Closed Height (mm) 'A'	Cylinder OD (mm) 'B'	Bore Dia. (mm) 'C'	Ram Dia. (mm) 'D'	Saddle Dia. (mm) 'E'	Weight (Approx.) 'kg'
50	50	7SP-50-50	78.5	392.7	175	135	100	80	73	16
50	100	7SP-50-100	78.5	785.4	225	135	100	80	73	19.5
50	150	7SP-50-150	78.5	1178.1	275	135	100	80	73	23
50	200	7SP-50-200	78.5	1570.8	325	135	100	80	73	27
75	50	7SP-75-50	113.1	565.5	185	160	120	90	87	23
75	100	7SP-75-100	113.1	1131	235	160	120	90	87	28
75	150	7SP-75-150	113.1	1696.5	285	160	120	90	87	34
75	200	7SP-75-200	113.1	2262	335	160	120	90	87	39
100	50	7SP-100-50	153.9	769.7	190	180	140	110	102	31.5
100	100	7SP-100-100	153.9	1539.4	240	180	140	110	102	39
100	150	7SP-100-150	153.9	2309.1	290	180	140	110	102	46
100	200	7SP-100-200	153.9	3078.8	340	180	140	110	102	54.5
150	50	7SP-150-50	227	1135	205	225	170	140	132	56
150	100	7SP-150-100	227	2270	255	225	170	140	132	67
150	150	7SP-150-150	227	3404.7	305	225	170	140	132	78
200	50	7SP-200-50	314.2	1570.8	220	260	200	160	152	73.5
200	100	7SP-200-100	314.2	3141.6	270	260	200	160	152	88
200	150	7SP-200-150	314.2	4712.4	320	260	200	160	152	104.5
250	100	7SLP-250-100	380.1	3801.3	280	285	220	180	168	111.5
250	150	7SLP-250-150	380.1	5702	330	285	220	180	168	128.7
250	200	7SLP-250-200	380.1	7602.7	380	285	220	180	168	145.8
300	100	7SLP-300-100	452.4	4523.9	295	317	240	200	196	146.2
300	150	7SLP-300-150	452.4	6785.8	345	317	240	200	196	169.7
300	200	7SLP-300-200	452.4	9047.8	395	317	240	200	196	192.3
400	100	7SLP-400-100	572.6	5725.6	325	360	270	220	215	195.8
400	150	7SLP-400-150	572.6	8588.3	375	360	270	220	215	222.3
400	200	7SLP-400-200	572.6	11451.1	425	360	270	220	215	248.9
500	100	7SLP-500-100	706.9	7068.6	335	420	300	250	235	270.2
500	150	7SLP-500-150	706.9	10602.9	385	420	300	250	235	306.5
500	200	7SLP-500-200	706.9	14137.2	435	420	300	250	235	344.1
600	100	7SLP-600-100	855.3	8552	405	440	330	275	260	360.1
600	150	7SLP-600-150	855.3	12829.5	455	440	330	275	260	404.9
600	200	7SLP-600-200	855.3	17106	505	440	330	275	260	455.4
800	100	7SLP-800-100	1134.1	11341.1	440	520	380	310	290	532
800	150	7SLP-800-150	1134.1	17011.7	490	520	380	310	290	597.1
800	200	7SLP-800-200	1134.1	22682.3	540	520	380	310	290	661.2
1000	100	7SLP-1000-100	1418.6	14186.3	475	575	425	350	330	728.1
1000	150	7SLP-1000-150	1418.6	21279.4	525	575	425	350	330	807.6
1000	200	7SLP-1000-200	1418.6	28372.5	575	575	425	350	330	885.4

**Note: Customized Jacks are available on request. The dimension are subjected to change on account of design improvement.**